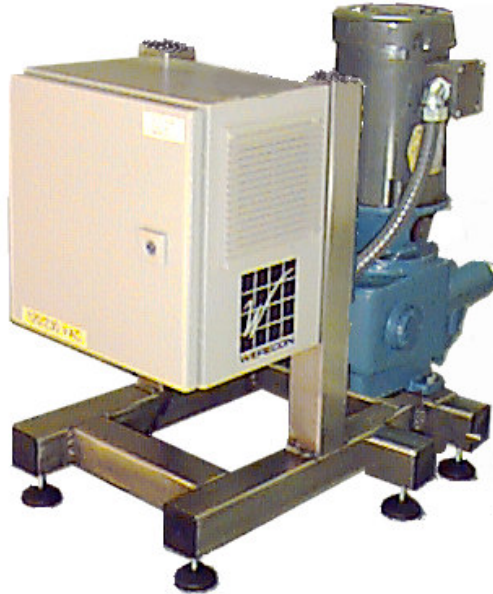


W-DM/W-PK Fertigation Component



General Description:

The W-DM/W-PK component consists of one metering pump available in six different sizes, driven by an integral control system. This system is designed to be an add-on modular component for the W-CM-GS Control system and can provide fertigation functionality to a WERECON pH Control system. The pump is motor driven and controlled using the latest VFD technology. This system is constructed from top quality components, and is suitable for outdoor use. It uses an high speed data communications port to communicate with the Green Scorpion Control line. All pumps come furnished with Alloy 20 heads standard. Alloy 20 is the most chemically resistant metal that is commonly available. This gives you the ability to inject the widest range of chemicals without fear of damaging the pump. The module also incorporates an integral cooling fan for reliable operation in hot climates.

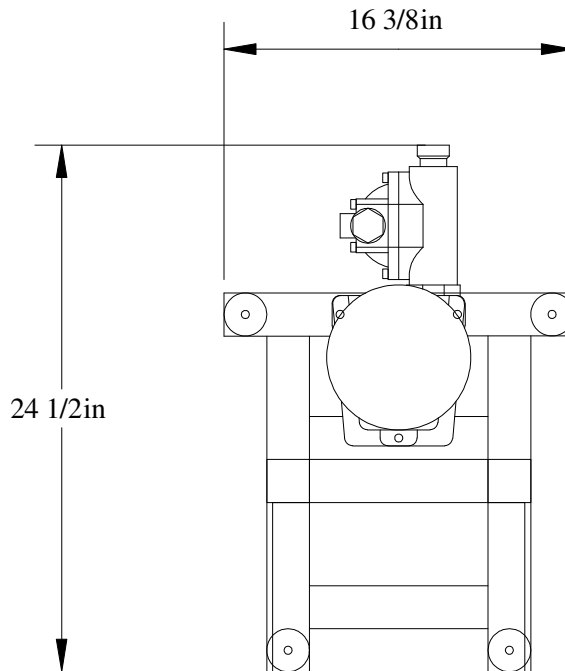
Features

- Liquid end is compatible for use with all fertilizer materials.
- The unit is mounted on a rugged stainless steel frame.
- Pre wired and plumbed for easy installation.
- High efficiency VFD design.
- Simple to operate and maintain
- Made in the USA.

WERECON Inc.

3320 N. 29th Ave / Phoenix, AZ 85017 / 1-888-WERECON / www.werecon.com

W-DM/W-PK Series Technical Information



Specifications

Dimensions	24 1/2" X 16 3/8" X 32"
Frame Construction	304 Stainless Steel
Diaphragm	PTFE
Liquid end	Alloy 20
Seals	Alloy 20
Check valves	Alloy 20
Motor Type	230/480 3 phase provided by on board VFD.
Input Power	110-120VAC 1phase at 10 AMP
Pump capacity	18, 22, and 30 GPH simplex or duplex
Pressure max.	350psi 1.7 Bar
Weight	120 lbs

Pre wired power cordset for standard 120VAC Outlet.

WERECON Inc.

3320 N. 29th Ave / Phoenix, AZ 85017 / 1-888-WERECON / www.werecon.com